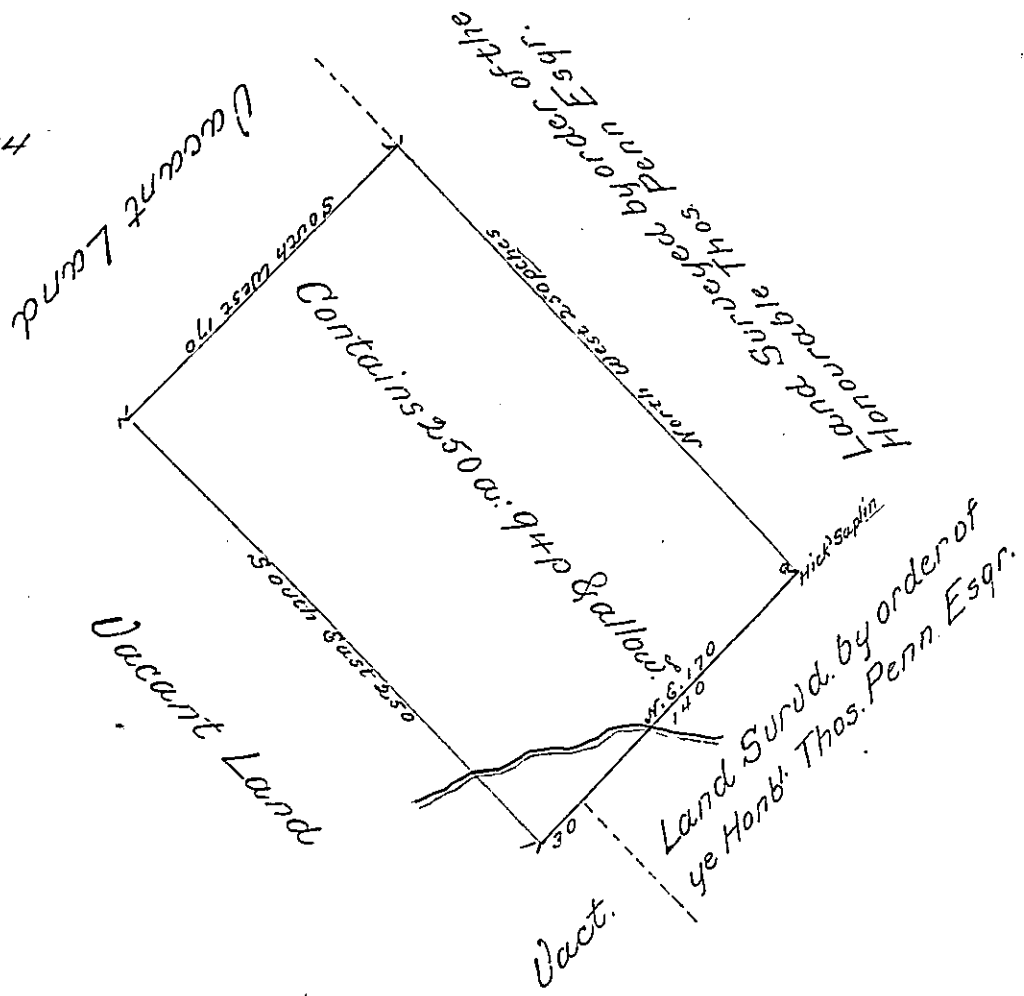


250
 173
 17500
 250
 106) 4250000 (40094
 1006
 104
 1



By Virtue of a Warrant from the Proprietaries Dated the Seventeenth Day of November 1735 Surveyed to Jacob Oldbright the above Described tract of Land Situate on a Branch of Ardelanny Creek in the County of Philada. Containing two hundred and Fifty acres with the usual allowance of Six pcent.

Surveyed Novemb. 24. 1735
 By Nicho. Scull.

IN TESTIMONY that the above is a copy of the original remaining on file in the Department of Internal Affairs of Pennsylvania, made conformably to an Act of Assembly approved the 16th day of February, 1833, I have hereunto set my Hand and caused the Seal of said Department to be affixed at Harrisburg, this seventh day of August 1900

James W. Fetta
 Secretary of Internal Affairs.